



FESTO

Simply part of the solution.

The Festo ★ Core Product Range.



Ready for dispatch from the Festo factory in 24 hours
Held in stock in 13 service centres worldwide!

Stock items



More than 2,200
products



Our recommendation: Look for the star!
→ www.festo.com/corerange



→ www.festo.com/catalogue/dsn
 → www.festo.com/catalogue/dsnu



DSN Round cylinders

- Diameter: 8, 10, **12, 16, 20, 25** mm (ISO 6432)
- Stroke length: 1 ... 500 mm
- Force: 24 ... 295 N
- Double-acting
- Fixed/adjustable cushioning



DSNU Round cylinders with self-adjusting cushioning PPS

- Diameter: 8, 10, **12, 16, 20, 25** mm to ISO 6432; 32, 40, 50, 63 mm
- Stroke length: 1 ... 500 mm
- Force: 19 ... 1870 N
- Double-acting
- Position sensing
- Fixed/adjustable/self-adjusting cushioning



→ www.festo.com/catalogue/adn



ADN Compact cylinders to ISO 21287

- Diameter: **12, 16, 20, 25, 32, 40, 50, 63, 80**, 100, 125 mm
- Stroke length: 1 ... 500 mm
- Force: 51 ... 7363 N
- Double-acting
- Position sensing
- Fixed/self-adjusting cushioning



→ www.festo.com/catalogue/adn-s



ADN-S Compact cylinder

- Diameter 6, 10 mm
- Stroke length 5, 10 mm
- Force 9.4 ... 47 N
- Double-acting
- Without cushioning

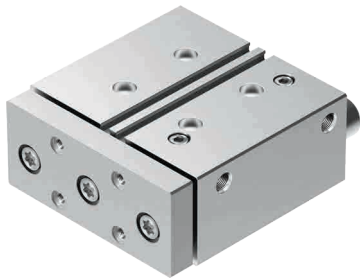


→ www.festo.com/catalogue/dgst



DGST Mini slide

- Size 6, 8, 10, 12, 16, 20, 25
- Stroke length 10 ... 200 mm
- Force 25 ... 589 N
- Position sensing
- Fixed/adjustable cushioning
- Recirculating ball bearing guide,
- ball bearing cage guide (for sizes 20, 25)



→ www.festo.com/catalogue/dfm



DFM-GF/KF Guided drives

- Diameter: **12, 16, 20, 25, 32, 40, 50, 63**, 80, 100 mm
- Stroke length: 10 ... 400 mm
- Force: 51 ... 4712 N
- Position sensing
- Fixed/adjustable cushioning
- Plain-bearing guide
- Recirculating ball bearing guide



→ www.festo.com/catalogue/dsbc



DSBC Standard cylinders to ISO 15552

- Diameter: **32, 40, 50, 63, 80**, 100, 125 mm
- Stroke length: 1 ... 2800 mm
- Force: 483 ... 7363 N
- Double-acting
- Position sensing
- Fixed/adjustable/self-adjusting cushioning



→ www.festo.com/catalogue/advc

→ www.festo.com/catalogue/aevc



ADVC/AEVC Short-stroke cylinders

- Diameter: 4, 6, 10, **12, 16, 20, 25, 32, 40, 50, 63**, 80, 100 mm
- Stroke length: 2.5 ... 25 mm
- Force: 4.9 ... 4712 N
- Double-acting, single-acting
- Position sensing
- Flexible cushioning
- Without thread, female thread, male thread





→ www.festo.com/catalogue/dgsl



DGSL Mini slides

- Diameter: 4, 6, 8, 10, 12, 16, 20, 25 mm
- Stroke length: 10 ... 200 mm
- Force: 17 ... 483 N
- Position sensing
- Fixed/adjustable cushioning
- Ball bearing cage guide



→ www.festo.com/catalogue/drrd



DRRD Semi-rotary drives

- Size: 8, 10, 12, 16, 20, 25, 32, 35, 40, 50, 63 mm
- Torque: 0.2 ... 112 Nm
- Swivel angle: 0 ... 180°
- Position sensing
- Cushioning: elastic (P), hydraulic shock absorbers
- Flanged shaft

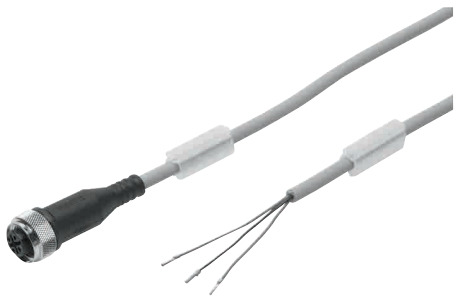


→ www.festo.com/catalogue/drvs



DRVS Swivel modules

- Size: 6, 8, 12, 16, 25, 32, 40 mm
- Torque: 0.15 ... 20 Nm
- Swivel angle: 90, 180, 270°
- Position sensing
- Fixed elastic cushioning



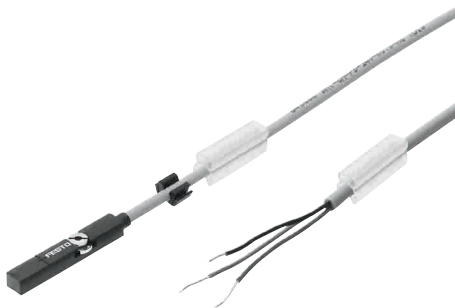
→ www.festo.com/catalogue/nebu



NEBU Connecting cables

Electrical connection:

- Open cable end
- Socket M5
- **Socket M8**
- **Socket M12**
- Socket 7/8"



→ www.festo.com/catalogue/sme-8m

→ www.festo.com/catalogue/smt-8m-a



SME-8M Proximity sensors for T-slot

- Switching output:
 - N/O contact, 3 wire
 - N/O contact, 2 wire
 - N/C contact, 3-wire
- Voltage: 0 ... 250 V DC, 230 V AC
- Cable length: 0.3, 2.5, 5, 7.5, 0.2 ... 10 m
- Plug connection: M8, M12
- Via reed contact



SMT-8M-A Proximity sensors for T-slot

- Switching output:
 - PNP, N/O contact, 3-wire
 - PNP, N/C contact, 3-wire
 - NPN, N/O contact, 3-wire
 - N/O contact, 2-wire
 - PNP, NPN switchable
 - PNP, N/C contact, N/O contact, switchable
- Voltage: 5 ... 30 V DC
- Cable length: 0.1 ... 30 m
- Plug connection: M8, M12
- Contactless PNP, NPN



→ www.festo.com/catalogue/sme-10m

→ www.festo.com/catalogue/smt-10m



SME-10M Proximity sensors for C-slot

- Switching output:
 - N/O contact, 2-wire
 - N/O contact, 3-wire
- Voltage: 24 V DC
- Plug connection: M8, M12
- With reed contact



SMT-10M Proximity sensors for C-slot

- Switching output:
 - PNP, N/O contact, 3-wire
 - NPN, N/O contact, 3-wire
 - PNP, N/O contact, 2-wire
- Voltage: 24 V DC
- Plug connection: M8, M12
- Non-contacting PNP, NPN



→ www.festo.com/catalogue/sde5



SDE5 Piezo-resistive pressure sensors

Five pressure measuring ranges:

- **-1 to 0 bar**
- -1 to 1 bar
- **0 to 2 bar**
- 0 to 6 bar
- **0 to 10 bar**

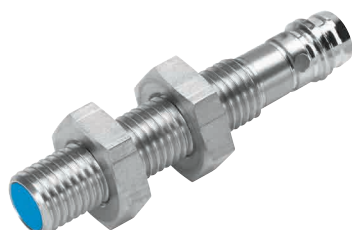


→ www.festo.com/catalogue/span



SPAN Pressure sensor

- Compact design 30 x 30 mm
- High-contrast display with blue backlighting
- Pressure measuring range -1 to 16 bar
- Voltage 20 ...30 V DC
- Switching output 2x PNP or 2x NPN selectable
- Electrical output 0.1 ... 10 V, 1 ... 5 V, 4 ... 20 mA
- Pneumatic connection G1/8, R1/8, NPT1/8, M5, push-in connector 4 mm
- Pressure switch
- Vacuum switch



→ www.festo.com/catalogue/sien



SIEN Inductive proximity sensors, polyamide housing

Design:

- Round, dia. 4 mm
- Round, dia. 6.5 mm
- **M5x 0.5**
- **M8x 1**
- M12x 1
- M18x 1
- M30x 1.6



→ www.festo.com/catalogue/srbs



SRBS Position sensors

- For semi-rotary drives DRVS 6 ... 40 and DSM 8, 10, 12
- Switching outputs PNP, NPN and NO, NC
- freely programmable
- Electrical connection M8
- Sensing range 0 ... 270°

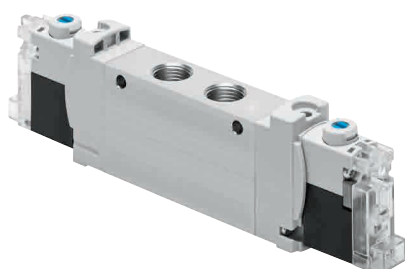


→ www.festo.com/catalogue/vuvg



VUVG Directional control valves, for individual connection

- In-line valves, semi in-line valves, sub-base valves
- Connection: M3, M5, M7, G1/8, G1/4
- Push-in connector: 3, 4, 6, 8, 10 mm
- Flow rate: 90 ... 1380 l/min
- Voltage: 5, 12, 24 V DC
- Solenoid actuated, piloted

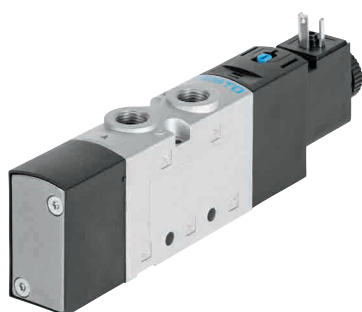


→ www.festo.com/catalogue/vuvg



VUVG-...-S Directional control valves

- In-line valves/individual valves, semi in-line valves, sub-base valves
- Connection: M5, M7, G1/8
- Valve function: 5/2-way, 2x 3/2-way
- Flow rate: 150, 360, 660 l/min
- Pressure range: 1.5 – 7 bar
- Voltage: 24 V DC
- Temperature range: -5 ... +50 °C
- IP40, IP65

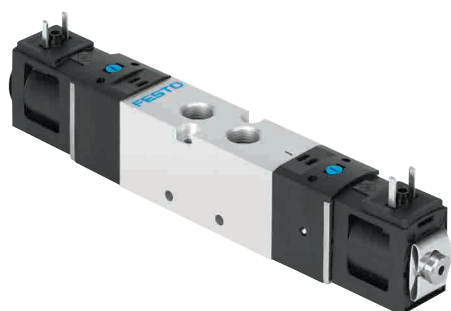


→ www.festo.com/catalogue/vuvs-l



VUVS-L Solenoid valves

- Valve sizes: **20, 25, 30**
- Valve functions: 3/2, 5/2, 5/3-way
- In-line valves
- Flow rate up to 700, 1300, 2300 l/min
- Width: 21, 26.5, 31 mm
- Voltage: 12, 24 V DC ; 24, 110, 120, 230, 240 V AC
- Piston spool with sealing cartridge. Operating voltage can be easily altered by changing the solenoid coil.

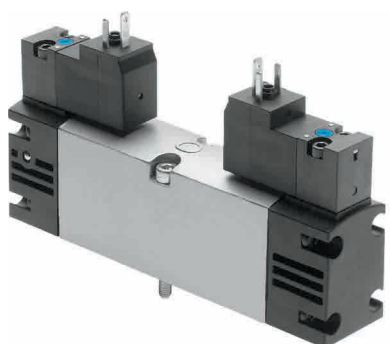


→ www.festo.com/catalogue/vuvs



VUVS-...-S Solenoid valves

- Valve functions: **3/2, 5/2-way**
- In-line valves/individual valves, semi in-line valves, sub-base valves
- Flow rate: 550, 1000 l/min
- Width: 20, 25 mm
- Voltage: 12, 24 V DC
- Piston spool with sealing cartridge or with sealing ring



→ www.festo.com/catalogue/vsva



VSVA Standard valves to ISO 15407-1

- ISO 5599-1 with M8 or M12 central plug
- Valve functions: **5/2, 5/3, 2x 3/2**
- Sub-base valves, solenoid actuated, pilot actuated
- Flow rate: 400 ... 1400 l/min
- Voltage: 12, 24 V DC; 24, 110 or 230 V AC



MS2/MS4/MS6 Compressed air preparation, MS series

MS series, from individual devices to service unit combinations:

- Soft-start valves MS-DL
- Soft-start/quick exhaust valves MS-SV
- On-off valves MS-EE, MS-EM1
- Pressure regulators MS-LR
- Filter regulators MS-LFR
- Service unit combinations MSB

Version	MS2	MS4	MS6
Connection sizes	M5, QS6	G1/8, 1/4, 3/8	G1/4, 3/8, 1/2, 3/4
Grid dimension [mm]	25	40	62
Flow rate of LFR qnN [l/min.]	150 / 330	1700	6200
Permissible primary pressure [bar]	Max. 7	Max. 14	Max. 20
Operating temperature [°C]	- 5 ... + 50	-10 ... +60	

→ www.festo.com/catalogue/MS



PUN Plastic tubing

- Outside diameter: **3, 4, 6, 8, 10, 12, 14, 16 mm**
- Operating pressure: -0.95 ... 10 bar
- Ambient temperature: -35 ... 60 °C
- Operating medium: compressed air, vacuum
- Materials: TPE-U(PU); conforms to RoHS and free of copper and PTFE
- Colours: blue, black, silver

→ www.festo.com/catalogue/pun



PUN-H/PUN-H-T Plastic tubing

- Outside diameter: **2, 3, 4, 6, 8, 10, 12, 14, 16 mm**
- Operating pressure: -0.95 ... 10 bar
- Ambient temperature: -35 ... 60 °C
- Operating medium: compressed air, vacuum, water
- Materials: TPE-U(PU); conforms to RoHS and free of copper
- Colours: blue, black, silver, neutral, translucent blue

→ www.festo.com/catalogue/pun-h



→ www.festo.com/catalogue/qs
 → www.festo.com/catalogue/qsm



QS push-in fittings

- Connections:
 - Standard series **QS: R1/8, R1/4, R1/2, R3/8, G1/8, G1/4, G1/2, G3/8, G3/4**
 - Mini series QSM: **M3, M5, M6, M7, M8, R1/8, G1/8**
- For outside tubing diameter:
 - Standard series QS: 4, 6, 8, 10, 12, 16 mm
 - Mini series QSM: 2, 3, 4, 6 mm
- Threaded port:
 - G thread with sealing ring
 - R thread with PTFE coating
 - Metric thread with sealing ring (to QSM)
- L-shape, T-shape, X-shape, Y-shape



→ www.festo.com/catalogue/hgl



HGL Piloted check valves

- Compact design – piloted non-return function
- Rotatable 360° around the screw-in axis after installation

Piloted check valves	HGL-...-QS-..., with push-in connector QS	HGL-...-B, with female thread
Pneumatic connection 2	M5, G1/8, G1/4, G3/8, G1/2	M5, G1/8, G1/4, G3/8, G1/2
Flow rate [l/min]	130 ... 1400	130 ... 1600
Operating pressure [bar]	0.5 ... 10	
Temperature range	-10 ... +60 °C	



→ www.festo.com/catalogue/nhps
 → www.festo.com/catalogue/kd4



NHPS coupling sockets/plugs

- AG connection: G1/8, G1/4, G3/8, G1/2
- IG connection: G1/4, G3/8, G1/2
- Barbed connector: N9
- Certified by IFA (Institute for Occupational Safety and Health)



KD4 Quick coupling sockets

- Connection M3, M5, G 1/8, G 1/4, G 3/8, G 1/2
- Diameter 2, 3, 4, 6, 9, 13 mm
- Threaded connection
 - Metric thread with sealing ring
 - G thread with sealing ring
- Shut-off on one side
- Shut-off on both sides
- Safety coupling to ISO 4414



→ www.festo.com/catalogue/grxa
 → www.festo.com/catalogue/grxz



GRLA-...-D/GRLZ-...-D One-way flow control valves

- Standard flow control valves, Series D, with QS push-in connector for standard O.D. tubing
- Rotatable 360° around the screw-in axis after installation



Valve function	GRLA-...-D, for exhaust air	GRLZ-...-D, for supply air
Screw-in thread (male thread)	M5, G1/8, G1/4, G3/8, G1/2	M5, G1/8
Adjustment component	Slotted head or knurled screw	
QS plug-in connector	QS 3, 4, 6, 8, 10, 12 mm	QS 3, 4, 6, 8 mm
Operating pressure	0.2 ... 10 bar	
Temperature range	-10 ... +60 °C	



→ www.festo.com/catalogue/u



U/U-B/UB Silencers

- For noise reduction at the exhaust ports of pneumatic components
- Polymer or die-cast metal
- Silencer insert materials: PE /bronze
- Threaded connection
- RoHS-compliant designs

Version	U-..., polymer	U-...-B, die-cast metal
Connection	G1/8, G1/4, G3/8, G1/2, G3/4, G1	G1/8, G1/4, G3/8, G1/2, G3/4, G1, NPT3/4-14, NPT1-11
Noise level	77 ... 80 dB(A)	77 ... 80 dB(A)



→ www.festo.com/catalogue/ante



AMTE Silencers

- For machine tool making in the packaging industry, automotive industry or woodworking industry
- Suitable for reducing noise at the exhaust ports of pneumatic systems
- Metal design, short and long versions
- Silencer insert materials: bronze
- Threaded connection

Version	AMTE-M-LH-..., long version
Connection	G1/8, G1/4, G3/8, G1/2, G3/4, G1, M3, M5, NPT1/8, NPT1/4, NTP-3/8, NPT-1/2, UNF10-32
Noise level	72 ... 88 dB(A)



→ www.festo.com/catalogue/cmsx



CMSX Positioners for linear and quarter turn actuators

- NAMUR interface (VDI/VDE 3845)
- LCD with backlighting
- Configurable setpoint value (input signal):
0 ... 10 V, 0 ... 20 mA, 4 ... 20 mA
- Position feedback signal: 4 ... 20 mA
- Operating pressure: 3 ... 8 bar
- Operating temperature: -5 ... 60 °C
- Flow rate: 50 and 130 l/min
- Safety functions:
 - **Fail safe close or fail safe open option**
 - **Fail safe freeze option (hold last position)**



→ www.festo.com/catalogue/srbc



SRBC Sensor boxes

- Ideal for outdoor and indoor applications in harsh environments:
 - IP67 and NEMA 4/4X
 - ATEX II 2G c T6 X, II 2D c 85 °C X
 - SIL 2 to IEC 61 508
 - Ambient temperature: -20 ... 80 °C
- Measuring principles:
 - Contacting (reed)
 - **Proximity sensor, inductive**
 - **Contact potential-free, changeover switch**

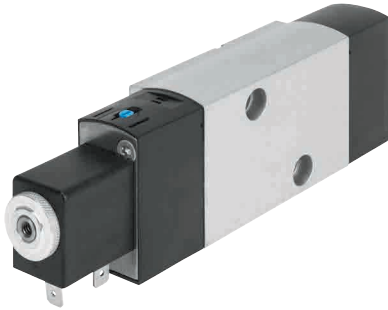


→ www.festo.com/catalogue/dfpd



DFPD Quarter turn actuators

- With rack and pinion gear unit
- Size: 10, 20, 40, 80, 120
- Nominal operating pressure: 5.5 bar
- Torque: 10 ... 120 Nm
- Ambient temperature: -20 ... 80 °C
- Swivel angle: 90°
- Flange hole pattern to ISO 5211
- NAMUR connection pattern for solenoid valves/
sensor boxes to VDI/VDE 3845



→ www.festo.com/catalogue/vsnc



VSNC Standard NAMUR valves, IEC EX-certified

- Single solenoid: 5/2- or 3/2-way, convertible
- Double solenoid: 5/2- or 5/3-way (B, E, G)
- VDI/VDE 3845 (NAMUR)
- Mechanical spring return
- Manual override: detenting, non-detenting, none
- Voltage: 12, 24 V DC; 24, 48, 120, 230 V AC
- Operating pressure: 2.5 ... 10 bar
- Temperature range: -20 ... 60 °C



→ www.festo.com/catalogue/vzwd



VZWD Single solenoid valves, 2/2-way

- Respond from 0 bar up to max. 90 bar operating pressure
- Directly actuated, in-line valves, normally closed, electric actuation
- Poppet valves with mechanical spring return
- Female threads: **G1/8, G1/4**, 1/8 NPT, 1/4 NPT
- Nominal size DN: 1, 1.5, 2, 2.5, 3, 4, 5, 6
- Suitable for use in vacuum technology, venting gas and tank systems, and safety shut-offs for burner controllers

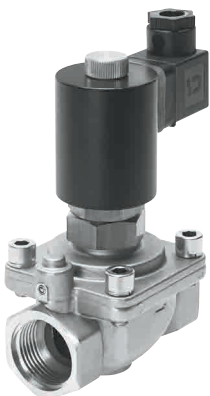


→ www.festo.com/catalogue/vzxf



VZXF Angle seat valves, 2/2-way

- Externally actuated, in-line valves, normally closed
- Poppet valves with mechanical spring return
- Media flow:
 - Above valve seat: closing in the direction of the media; for gaseous media
 - **Below valve seat: closing against the direction of the media; for gaseous and liquid media**
- G threads and NPT threads
- Connection sizes: 1/2, 3/4, 1, 1 1/4, 1 1/2, 2
- Nominal pressure: PN10, PN40
- Temperature of medium: Standard NBR -10 ... 80 °C, PTFE -40 ... 200 °C

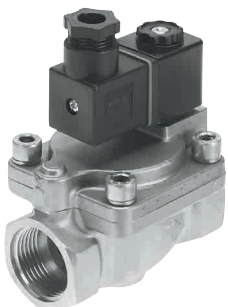


→ www.festo.com/catalogue/vzwf



VZWF Single solenoid valves, 2/2-way

- Force pilot operated solenoid valves, in-line valves normally closed
- Female threads: G1/4, G3/8, G1/2, G3/4, G1, G1 1/4, G1 1/2, G2
- NPT threads: 1/4, 3/8, 1/2, 3/4, 1, 1 1/4, 1 1/2, 2
- Operating pressure: 0 ... 10 bar, depending on coils used and nominal diameter
- Suitable for closed applications, such as cooling or filling systems, vacuum, liquid gas, bottling systems, etc.



→ www.festo.com/catalogue/vzwm



VZWM Solenoid valves, 2/2-way

- Servo-operated solenoid valves, in-line valves, normally closed
- Female threads: **G1/4, G3/8, G1/2, G3/4, G1, G1 1/4, G1 1/4, G2**
- NPT threads: 1/4, 3/8, 1/2, 3/4, 1, 1 1/4, 1 1/2, 2
- Nominal operating pressure:
 - Gases 0.5 ... 10 bar
 - Fluids 0.5 ... 6 bar



Ready for dispatch from the Festo factory in 5 days or less
Assembled for you in 4 service centres worldwide!

Assembled for you from stock items



ESBF



ERMO



EMMS-ST



CMMO-ST



EPCO



ELGC



EGSC



ELGA



EGC



EMME-AS



CMMP-AS



CAMC



ADN



DGC



DGC-K



DFPD



DSNU



DSBC



VTSA/VTSA-F



VTUS



CPX



VUVG



VUVG-T1



VUVS



VTUG



MPA-S
MPA-CPX



MPA-L



VN



VAS



OVEL



LFR



LR



MSB

Up to 6×10^{12}
variants per
product series



→ www.festo.com/catalogue/ermo



ERMO Electric semi-rotary drives

- Size: 12, 16, 25, 32
- Max. driving torque: 0.15 ... 5 Nm
- Infinite rotation angle



→ www.festo.com/catalogue/epco



EPCO Electric cylinders

- Size: 16, 25, 40
- Stroke length: 50 ... 400 mm
- Force: 50 ... 650 N
- Linear drive with piston rod and motor



→ www.festo.com/catalogue/esbf



ESBF Electric cylinders

- Size: 32, 40, 50, 63, 80, 100
- Stroke length: 30 ... 1500 mm
- Force: 600 ... 17000 N
- Motor can be mounted using axial or parallel kit
- Linear drive with ball screw in Clean Design



→ www.festo.com/catalogue/elga



Toothed belt axes ELGA

- High speeds of up to 10 m/s
- High lateral forces and torques
- Size: 70, 80, 120, (150)
- Max. stroke length: 7400 mm (8500 mm)
- Force 350 ... 1300 N (... 2000 N)
- Integrated guide.



→ www.festo.com/catalogue/egc-bs

→ www.festo.com/catalogue/egc-tb



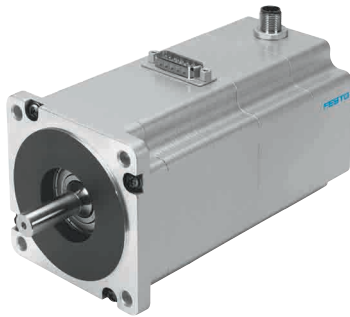
EGC-BS Spindle axes

- Size: 70, 80, 120, 185
- Stroke length: 50 ... 3000 mm
- Force: 300 ... 3000 N



EGC-TB Toothed belt axes

- Size: 50, 70, 80, 120, 185
- Stroke length: 1 ... 8500 mm (longer strokes on request)
- Force: 50 ... 2500 N

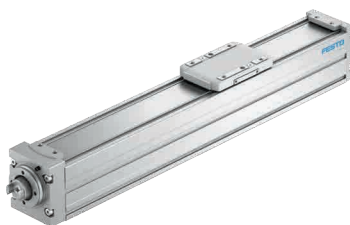


→ www.festo.com/catalogue/emms-st



EMMS-ST Stepper motors

- Size: 28, 42, 57, 87
- Holding torque: 0.09 ... 8.6 Nm
- Voltage: 24 ... 72 V DC
- Nominal current: 1.4 ... 9.5 A
- Suitable motor cable, motor flange



→ www.festo.com/catalogue/elgc



Toothed belt axes ELGC-TB

- Size 45, 60, 80
- Max. stroke length: 2000 mm
- Force 75 ... 250 N
- Integrated recirculating ball bearing guide



→ www.festo.com/catalogue/egsc



EGSC Mini-slides

- Size 25, 32, 45, 60
- Stroke length 25 ... 200 mm
- Integrated recirculating ball bearing guide



→ www.festo.com/catalogue/emme-as



EMME-AS Servo motors

- Size: 40, 60, 80, 100 mm
- Nominal torque: 0.12 ... 6.4 Nm
- Nominal voltage: 360, 565 V DC
- Nominal current: 0.7 ... 4.1 A



→ www.festo.com/catalogue/cmmp-as



CMMP-AS Motor controllers

- Nominal voltage: 230 V AC, 400 V AC
- Nominal current: 2 ... 30 A
- Rated power: 500 ... 18000 VA



→ www.festo.com/catalogue/cmno-st



CMMO-ST Motor controllers

- Voltage: 24 V DC
- Nominal current: 5 A
- Micro-step, 12800 steps/rev
- Closed-loop servo controller for stepper motors

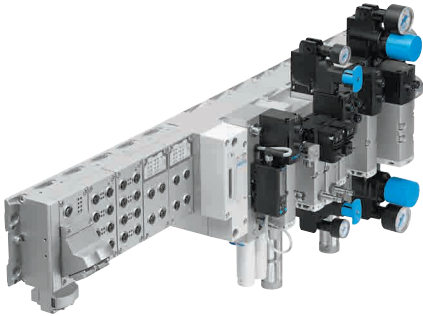


→ www.festo.com/catalogue/CAMC



CAMC Interface, memory cards

- Interfaces and memory cards for motor controller



→ www.festo.com/catalogue/vtasa/vtasa-f



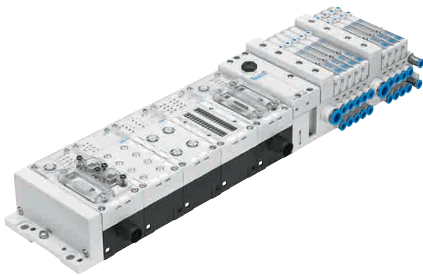
Valve terminal VTSA / VTSA-F

5 Valve sizes can be mixed, with maximum flow rates

- Meets ISO 15407-2/5599-2 or equipped with high-flow manifold sub-base
- Control via fieldbus/CPX or multipin
- Supply voltage 24 V DC for CPX, 24 V DC and 110 V AC for multipin
- Max. 32 valve positions/max. 32 solenoid coils
- Multiple valve functions: 5/2, 5/3, 2x 3/2, 2x 2/2, and others

CPX functionality

- Max. 10 electric modules, digital I/Os and/or Analogue I/Os
- Parameterisation of I/Os and Profisafe I/Os
- Integrated diagnostics and preventive maintenance concepts

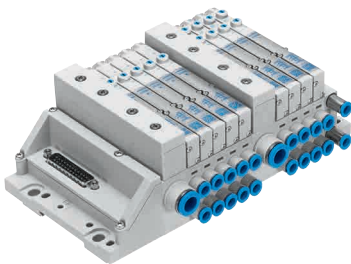


→ www.festo.com/catalogue/mpa-s



Valve terminal MPA-S

- Flow rate: 360 ... 700 l/min
- Width: 10 mm, 20 mm
- Variability: flexible pressure supply, variable pressure zones, additional pressure supply at any position
- Serial valve control – up to 64 valve positions or 128 coils
- Open for PROFIBUS-DP, INTERBUS, CANopen, DeviceNet, CC-Link
- Pressure range: -0,9 ... 10 bar
- Degree of protection: IP65
- Multipin plug connection, CPI-, AS-Interface and fieldbus connection via modular electrical terminal Type CPX

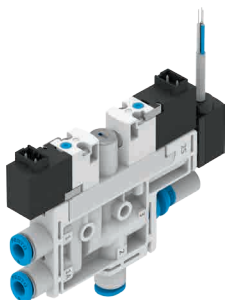


→ www.festo.com/catalogue/mpa-l



Valve terminal MPA-L

- Manifold sub-base in polymer design
- Protection against tampering by fixed throttle
- 3 valve sizes can be mixed, expandable in individual steps
- Flow rate: 160 – 870 l/min
- Width: 10, 14 and 20 mm
- Push-in-connector: 3, 4, 6, 8, 10, 12 mm
- Degree of protection: IP65, IP67
- Valve functions: 5/2, 5/3, 2x 3/2, 2x 2/2 as well as special functions
- Multipin plug connection, I-Port/IO-Link and fieldbus connection via modular electrical terminal type CPX



→ www.festo.com/catalogue/ovel



OVEL Vacuum generators

- Mounting on supply manifold with max. 8 spaces
- Nominal size 0.45 ... 0.95 mm
- Connection
 - push-in connector QS3, QS4, QS6
- Vacuum solenoid valve ON/OFF
- Optional with ejector pulse
- Integrated vacuum sensor

The Festo Online Shop – much more than just ordering 24/7

Would you like to know more?

Our guided tour offers more tips on how you can benefit from the services offered by our Online Shop!



→ www.festo.com/onlineshop

★ / ☆ **Festo core product range**

covers 80% of your automation tasks

Worldwide: Always in stock

Superb: Festo quality at an attractive price

Easy: Simplifies procurement and warehousing

Generally ready for shipping ex works in 24 h

Held in stock in 13 service centres worldwide!

More than 2,200 products

Generally ready for shipping ex works in 5 days

Assembled for you in 4 service centres worldwide!

Up to 6×10^{12} variants per product series

